

COVENTRY ROAD

Tarmac Pathway

Tarmac Pathway

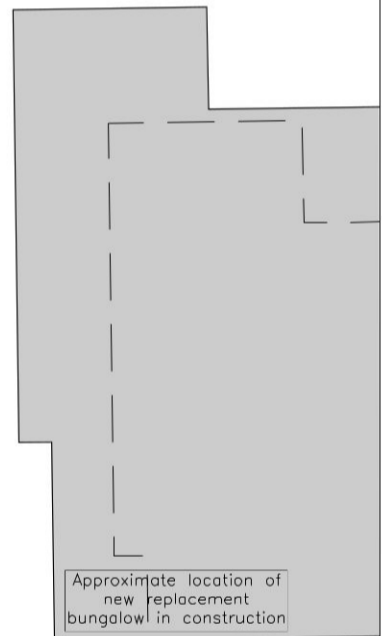
Existing vehicular access and gates

Post / Rail Fence 0.95m high

- SITE BOUNDARY*
- - - EXISTING CHURCH OUTLINE
- - - PREVIOUS PLANNING APPLICATION OUTLINE

*SITE BOUNDARY TO SOUTH AND EAST BOUNDARY ASSUMED AS CENTRELINE OF HEDGE, NOT THE FENCELINE. TBC.

All existing trees to be protected as per the recommendations of the tree survey and arboricultural impact assessment prepared by tree specialist.



Existing demolished dwelling outline dashed

Rev	Date	Description	Init
A	29.6.17	Updates following client comments	DA
B	18.7.17	Parking Layout Updates	DA
C	08.8.17	Updated to revised topographical survey	DA
D	11.9.17	Updated to revised building plan	DA



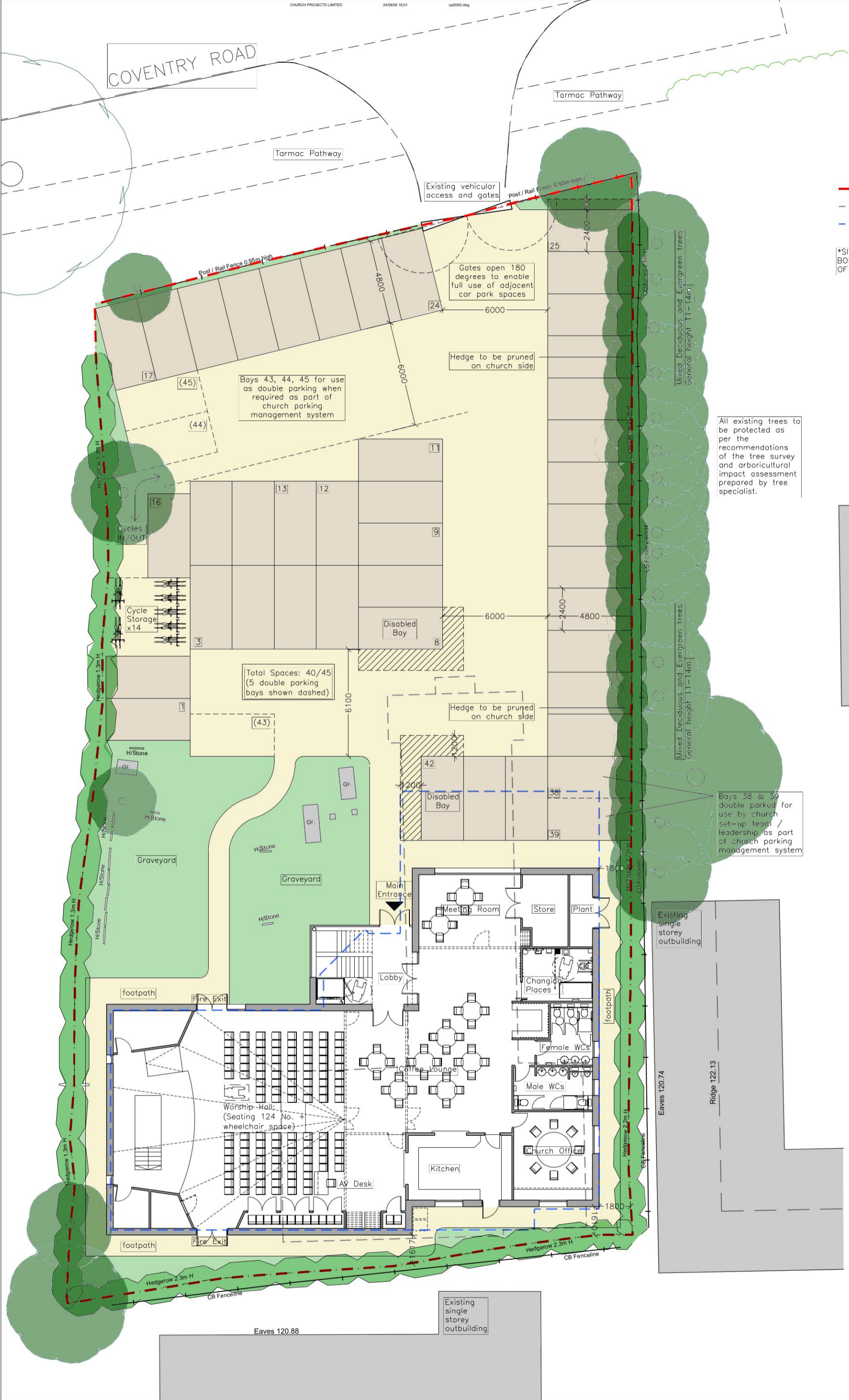
Chartered Architects, Property Consultants and Designers
Unit A3 Chaucer Business park, Ditons Road, Polegate, Sussex BN26 6QH
Tel: 01323 46900 Email: admin@cparchitects.co.uk Web: www.cparchitects.co.uk

project name
DUNCHURCH BAPTIST CHURCH RUGBY

drawing title
SITE PLAN AS PROPOSED

date	scale
23/05/17	1:100
drawn DA	checked PW

project number drawing number revision
DBC.17 /122 D



Total Spaces: 40/45 (5 double parking bays shown dashed)

Gates open 180 degrees to enable full use of adjacent car park spaces

Hedge to be pruned on church side

Bays 43, 44, 45 for use as double parking when required as part of church parking management system

Disabled Bay

Hedge to be pruned on church side

Disabled Bay

Bays 38 & 39 double parked for use by church set-up team / leadership as part of church parking management system

Existing single storey outbuilding

Existing single storey outbuilding

Eaves 120.88

Eaves 120.74

Ridge 122.13

Hedgerow 2.3m H

CB Fenceline

footpath

footpath

Fire Exit

Fire Exit

Main Entrance

Lobby

Worship Hall: (Seating 124 No. + wheelchair space)

Kitchen

Church Office

Male WCs

Female WCs

Changing Places

Plant

Store

Meeting Room

AV Desk

Gr.

Gr.

Gr.

Gr.

Gr.

Gr.

Gr.

Gr.

Gr.

Gr.

Gr.

Gr.

Gr.

Gr.

Gr.

Gr.

Gr.

Gr.

Gr.

Gr.

Gr.

Gr.

Gr.

Gr.

Gr.

Gr.

Gr.

Gr.

Gr.

Gr.

Gr.

17

(45)

(44)

16

Cycles IN/OUT

3

1

(43)

1

1

1

1

1

1

1

1

1

1

1

1

1

1

1

1

1

1

1

1

1

1

1

1

1

11

12

13

9

8

6000

6000

6000

6000

6000

6000

6000

6000

6000

6000

6000

6000

6000

6000

6000

6000

6000

6000

6000

6000

6000

6000

6000

6000

6000

6000

6000

6000

6000

6000

4800

4800

4800

4800

4800

4800

4800

4800

4800

4800

4800

4800

4800

4800

4800

4800

4800

4800

4800

4800

4800

4800

4800

4800

4800

4800

4800

4800

4800

4800

4800

4800

4800

4800

4800

6000

6000

6000

6000

6000

6000

6000

6000

6000

6000

6000

6000

6000

6000

6000

6000

6000

6000

6000

6000

6000

6000

6000

6000

6000

6000

6000

6000

6000

6000

6000

6000

6000

6000

6000

24

25

24

24

24

24

24

24

24

24

24

24

24

24

24

24

24

24

24

24

24

24

24

24

24

24

24

24

24

24

24

24

24

24

24

2400

2400

2400

2400

2400

2400

2400

2400

2400

2400

2400

2400

2400

2400

2400

2400

2400

2400

2400

2400

2400

2400

2400

2400

2400

2400

2400

2400

2400

2400

24